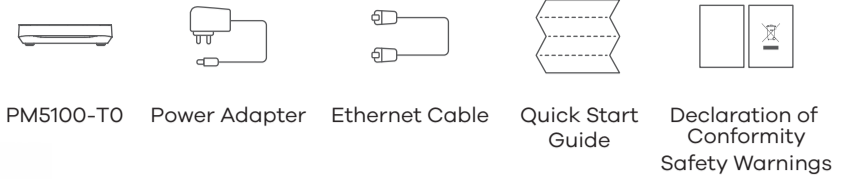




Quick Start Guide

ENGLISH | DEUTSCH | FRANÇAIS | ITALIANO | ESPAÑOL |
NEDERLANDS | SVENSKA | SUOMI

Package Contents



Support Information

EU
<https://support.zyxel.eu>

See the User's Guide at www.zyxel.com for more information, including customer support and safety warnings.

EU Importer

Zyxel Communications A/S
Gladsaxevej 378, 2. th. 2860 Søborg, Denmark.
<https://www.zyxel.com/dk/da/>

UK Importer

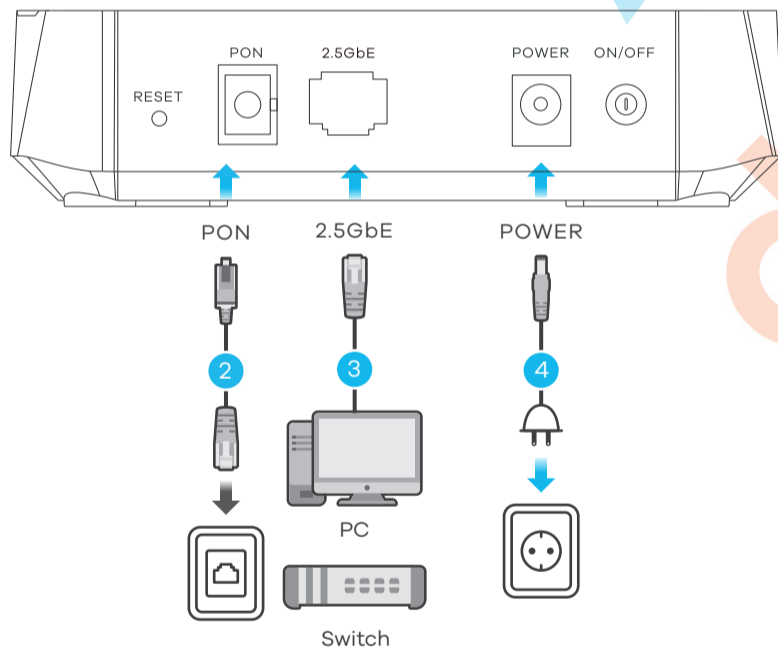
Zyxel Communications UK Ltd
2 Old Row Court, Rose Street, Wokingham,
RG40 1XZ, United Kingdom (UK)
<https://www.zyxel.com/uk/en/>

Copyright © 2021 Zyxel and/or its affiliates. All Rights Reserved.



Step 1 Hardware Installation


Warning! To avoid possible eye injury, do NOT look into an operating fiber-optic module's connector.

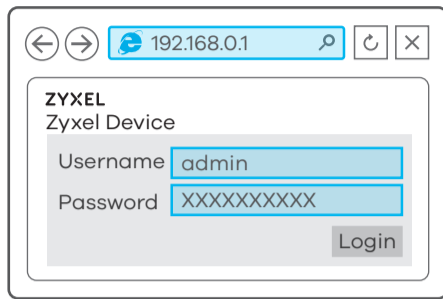
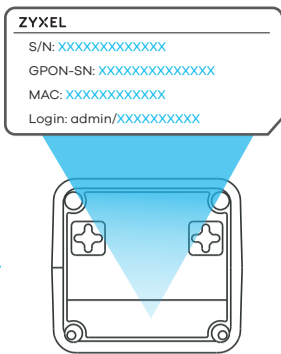


- EN**
- 1 Remove the cover on the **PON** port.
 - 2 Connect the fiber optic cable from your service provider's network to the **PON** port.
 - 3 Connect a computer to the **2.5GbE** port using the yellow Ethernet cable.
 - 4 Use the included power adapter to connect the power socket to a power outlet. Press the **ON/OFF** button to turn on the PM5100-T0.
- DE**
- 1 Entfernen Sie die Abdeckung am **PON** Anschluss.
 - 2 Schließen Sie das Glasfaserkabel von Ihrem Dienstanbieter an den **PON** Anschluss an.
 - 3 Schließen Sie einen Computer mit dem gelben Ethernet-Kabel an den **2.5GbE**-Port an.
 - 4 Schließen Sie den mitgelieferten Netzadapter an den Netzanschluss und an eine Steckdose an. Drücken Sie auf die **ON/OFF** Taste, um den PM5100-T0 einzuschalten.
- FR**
- 1 Retirez le couvercle du port **PON**.
 - 2 Connectez le câble à fibre optique du réseau de votre fournisseur de services au port **PON**.
 - 3 Connectez un ordinateur au port **2.5GbE** en utilisant le câble Ethernet jaune.
 - 4 Utilisez l'adaptateur d'alimentation fourni pour connecter le périphérique à une prise secteur. Appuyez sur le bouton **ON / OFF** pour allumer le PM5100-T0.
- IT**
- 1 Rimuovere la copertura dalla porta **PON**.
 - 2 Collegare il cavo in fibra ottica dalla rete del fornitore di servizi alla porta **PON**.
 - 3 Collegare un computer alla porta **2.5GbE** mediante il cavo Ethernet Giallo.
 - 4 Utilizzare l'alimentatore fornito a corredo per collegare la presa di alimentazione a una presa della corrente. Premere il pulsante **ON/OFF** pre accedere l'PM5100-T0.
- ES**
- 1 Retire la tapa del puerto **PON**.
 - 2 Conecte el cable de fibra óptica de la red de su proveedor de servicios al puerto **PON**.
 - 3 Conecte un equipo al puerto **2.5GbE** con el cable Ethernet amarillo.
 - 4 Utilice el adaptador de alimentación incluido para conectar el enchufe de alimentación a una toma de corriente. Presione el botón **ON/OFF** para encender el PM5100-T0.
- NL**
- 1 Verwijder de hoes van de **PON**-poort.
 - 2 Verbind de glasvezelkabel van het netwerk van je service provider met de **PON**-poort.
 - 3 Sluit een computer aan op de **2.5GbE**-poort met de gele Ethernetkabel.
 - 4 Gebruik de bijgesloten stroomadapter om de router op een stopcontact aan te sluiten. Druk op de **ON/OFF**-toets om de PM5100-T0 aan te schakelen.
- SE**
- 1 Ta bort höljet från **PON** porten.
 - 2 Anslut den fiberoptiska kabeln från din tjänsteleverantörs nätverk till **PON**-porten.
 - 3 Anslut en dator till **2.5GbE**-porten med den gula Ethernet-kabeln.
 - 4 Använd den medföljande strömadaptern och anslut eluttaget till ett vägguttag. Tryck på **ON/OFF** knappen för att sätta på din PM5100-T0 produkt.
- FI**
- 1 Irrota **PON**-portin suojus.
 - 2 Liitä operaattorin valokuitukaapeli **PON**-porttiin.
 - 3 Kytke tietokone **2.5GbE**-porttiin keltaisella Ethernet-kaapelilla.
 - 4 Yhdistä mukana toimitettu virtalähde pistorasiaan ja virtajohto modeemiin. Käynnistä PM5100-T0 painamalla virtakytkin pohjaan (**ON/OFF**).

Web Configurator (Optional; for Troubleshooting)

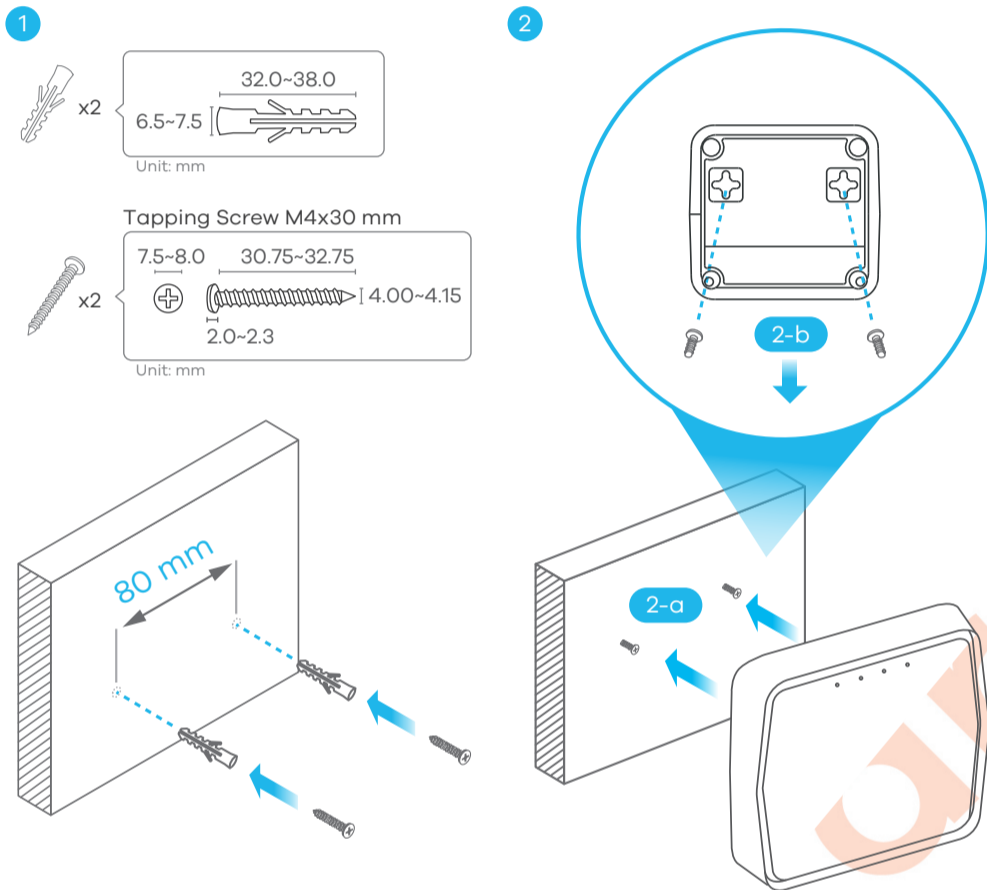
 <http://192.168.0.1>

 User Name : **admin**
Password : **Refer to the Device label** (default)







- EN** Open a web browser and go to <http://192.168.0.1>. Enter the default **User Name (admin)** and admin login password (on the device label), and then click **Login**.
- DE** Öffnen Sie einen Webbrowser, und rufen Sie <http://192.168.0.1> auf. Geben Sie den **Standard-Benutzernamen(admin)** und das Admin Anmeldekennwort (auf dem Etikett des Geräts) ein und klicken Sie anschließend auf **Login (Anmelden)**.
- FR** Ouvrez un navigateur Web et entrez l'adresse <http://192.168.0.1>. Entrez le **nom d'utilisateur (admin)** par défaut et le mot de passe d'administrateur (sur l'étiquette de l'appareil), puis cliquez sur **Connexion**.
- IT** Aprire il browser web dal computer e inserire l'indirizzo IP di gestione predefinito (192.168.0.1). Immettere il nome **utente predefinito (admin)** e la Password (sull'etichetta), quindi fare clic su **Login**.
- ES** Abra un explorador web y vaya a <http://192.168.0.1>. Escriba el **nombre de usuario (admin)** y la contraseña de inicio de sesión admin (en la etiqueta del dispositivo), a continuación haga clic en **Login (Iniciar sesión)**.
- NL** Open een webbrowser en ga naar <http://192.168.0.1>. Voer de standaard Gebruikersnaam (**admin**) en admin login wachtwoord (op het apparaat label) in en klik dan op **Login**.
- SE** Öppna en webbläsare och gå till <http://192.168.0.1>. Ange standard **användarnamn (admin)** och administratörslösenord (på enhetens etikett), och klicka sedan på **Login (inloggning)**.
- FI** Avaa selain ja siirry osoitteeseen <http://192.168.0.1>. Kirjoita oletusarvoinen **käyttäjätunnus (admin)** ja pääkäyttäjän salasana (laitteeseen kiinnitetystä tarrasta) ja valitse sitten **Login (Kirjaudu)**.

Wall Mounting (Optional)



- EN**
 - ① Drill two holes on the wall at the distance of 80 mm. Insert the screw anchors and screws (not provided).
 - ② Place the PM5100-T0 so the wall mount holes line up with the screws (2-a). Slide the PM5100-T0 down gently to fix it into place (2-b).
- DE**
 - ① Bohren Sie zwei Löcher im Abstand von 80 mm in die Wand. Schieben Sie die Dübel und Schrauben (nicht mitgeliefert) ein.
 - ② Stellen Sie das PM5100-T0 so auf, dass die Bohrungen für die Wandmontage mit den Schrauben (2-a) übereinstimmen. Schieben Sie das PM5100-T0 vorsichtig nach unten, um es zu fixieren (2-b).
- FR**
 - ① Percez deux trous sur le mur espacés de 80 mm. Insérez les chevilles et les vis (non fournies).
 - ② Placez le PM5100-T0 de sorte que les trous de montage mural soient alignés avec les vis (2-a). Faites glisser doucement le PM5100-T0 pour le mettre en place (2-b).
- IT**
 - ① Praticare due fori sulla parete alla distanza di 80 mm. Inserire i tasselli e le viti (non in dotazione).
 - ② Posizionare il PM5100-T0 in modo che i fori di montaggio a parete siano allineati con le viti (2-a). Far scorrere delicatamente il PM5100-T0 verso il basso per fissarlo in posizione (2-b).
- ES**
 - ① Perfore dos agujeros en la pared a una distancia de 80 mm. Inserte los anclajes de los tornillos y los tornillos (no incluidos).
 - ② Coloque el PM5100-T0 de forma que los orificios del soporte queden alineados con los tornillos (2-a). Deslice suavemente el PM5100-T0 hacia abajo para que quede bien encajado (2-b).
- NL**
 - ① Boor twee gaten in de muur op een afstand van 80 mm van elkaar. Plaats de pluggen en schroeven (niet meegeleverd).
 - ② Plaats de PM5100-T0 zo dat de montagegaten in de muur op een lijn zitten met de schroeven (2-a). Schuif de PM5100-T0 voorzichtig naar beneden om hem vast te zetten (2-b).
- SE**
 - ① Borra två hål i väggen med 80 mm mellanrum. Tryck in skruvankarna och skruvarna (medföljer ej).
 - ② Placera PM5100-T0 så att väggmonteringshålen är i linje med skruvarna (2-a). Skjut försiktigt in PM5100-T0 så att den sitter fast (2-b).
- FI**
 - ① Poraa seinään kaksi reikää 80 mm:n etäisyydelle toisistaan. Kiinnitä reikiin ruuviankkurit ja ruuvit (eivät sisälly toimitukseen).
 - ② Aseta PM5100-T0 siten, että seinäkiinnikkeen reiät osuvat ruuveihin (2-a). Kiinnitä PM5100-T0 paikalleen liu'uttamalla sitä varovasti alaspäin (2-b).

LEDs

| | |
|--|--|
|  POWER | <p>Green On - Power on and system ready Blinking - Booting up</p> <p>Red On - System failure Blinking - Firmware upgrade is in progress</p> <p>— Off - Power off</p> |
|  PON | <p>Green On - PON connection ready Blinking - Trying to establish link</p> <p>— Off - Fiber link is down</p> |
|  LOS | <p>Green On - PON transceiver power down Blinking - R(x) low power alarm</p> <p>— Off - PON is working normally</p> |
|  2.5GbE | <p>Green On - Ethernet link is up Blinking - Transmitting/receiving data</p> <p>— Off - Ethernet link is down</p> |

Troubleshooting

The PM5100-T0 doesn't turn on.

- Make sure the power cable is connected, and you've pressed the power button.
- Make sure the power adapter is connected to an appropriate power source.
- Make sure the power source is turned on.

I cannot see or access the Login screen in the Web Configurator.

- Make sure your computer has an IP address in the same subnet as the PM5100-T0. If your PM5100-T0 uses the default IP address, your computer should have an IP address from 192.168.0.2 to 192.168.0.254. See your computer help.
- Make sure you are using the correct IP address.

- The default IP address is 192.168.0.1.

- If you changed the IP address and have forgotten it, you have to reset the PM5100-T0 to its factory defaults.

- Make sure your Internet browser does not block pop-up windows and has JavaScript enabled.

- Make sure you have entered **User Name** and **Login Password** correctly.

Enter the default User Name (admin) and admin Login Password (on the device label), and then click **Login**.

If you change the default password, enter the new password. If you don't remember the new password, use a pin to push the **RESET** button for more than 5 seconds to return the device to the factory defaults, including admin password on the back label.

I cannot access the Internet.

- Check the hardware connections and LED behavior. If the PON LED is off, restart the PM5100-T0.
- Check if the fiber cable has come loose or is damaged.
- Contact the vendor to replace any damaged cables.
- Disconnect all of the cables from the PM5100-T0 and reconnect them.